

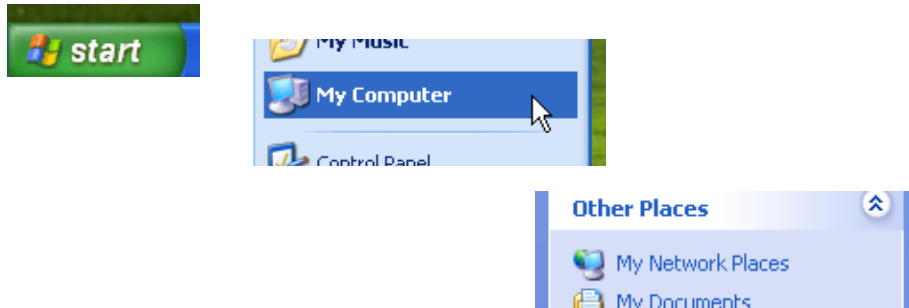
UTAH-100 System Startup

Windows™ 7 and XP Versions

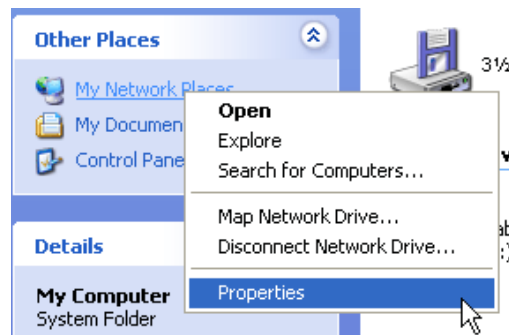
The Utah-100 graphical user interface utilizes a set-up procedure for IP address configuration. This procedure varies somewhat between Windows™ XP and 7 versions. This bulletin's purpose is to guide you through the process on site by describing the two procedures from startup to IP address setting

Windows XP

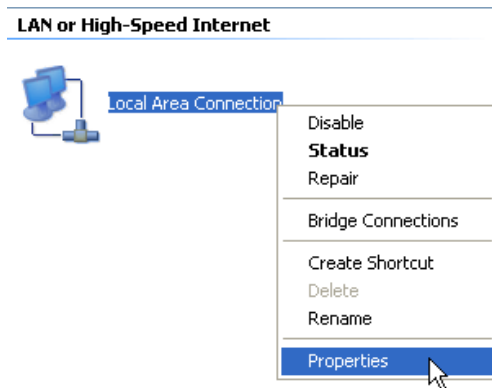
Click the Start button, select My Computer, right-click My Network Places,



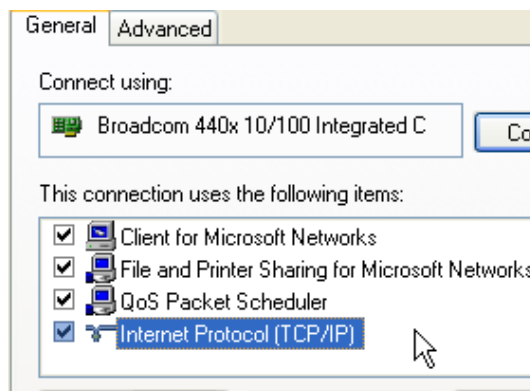
and select Properties from the pop-up menu.



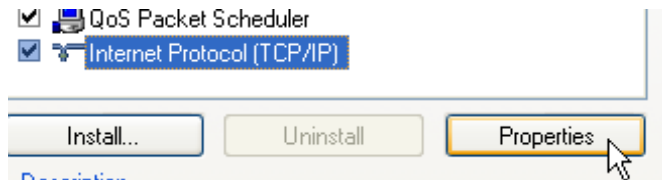
When the following window appears, right-click Local Area Connection, and select Properties once again.



From the next window, highlight Internet Protocol,



then click the Properties button.





Enter the following IP address when the next window appears,

The screenshot shows the 'General' tab of a network configuration dialog box. It contains a text box with the following text: "You can get IP settings assigned automatically if your network supports this capability. Otherwise, you need to ask your network administrator for the appropriate IP settings." Below this text are two radio buttons: "Obtain an IP address automatically" (unselected) and "Use the following IP address:" (selected). Under the selected option, there are three input fields: "IP address:" with the value "192 . 168 . 6 . 101", "Subnet mask:" with the value ". . .", and "Default gateway:" with the value ". . .".

and click the OK button.

The screenshot shows the same network configuration dialog box, but now with the "Use the following DNS server addresses:" radio button selected. It includes input fields for "Preferred DNS server:" and "Alternate DNS server:", both containing ". . .". There is also an "Advanced..." button. At the bottom, the "OK" button is highlighted with a mouse cursor, and the "Cancel" button is also visible.

Close all windows, launch your Browser, and enter the address associated with your UTAH-100 device. This address is located on the rear of the UTAH-100, next to the Ethernet port.

Now enter the following (default) user ID and password:

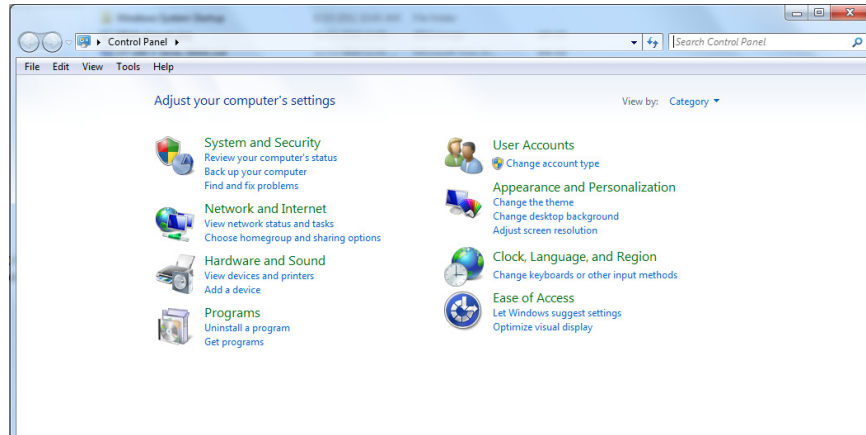
User ID: admin

Password: password

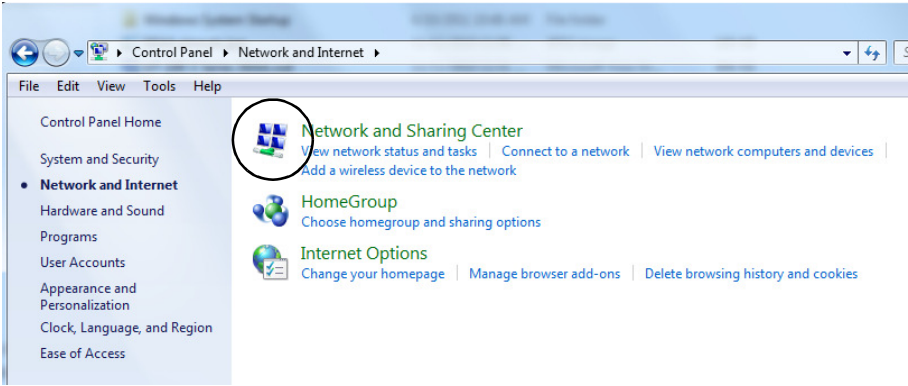


Windows 7

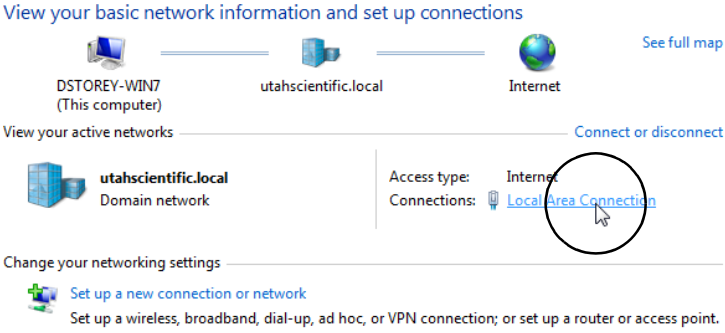
Click the Start Button and select Network and Internet



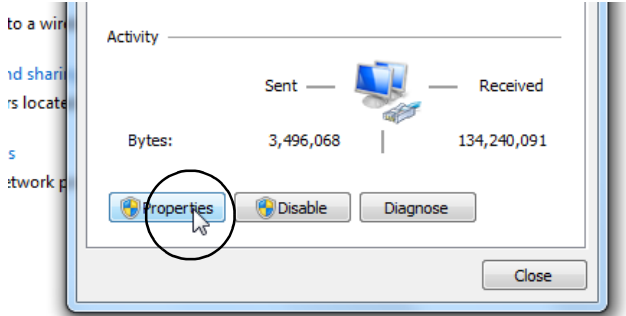
Next, click Network and Sharing Center



Now click Local Area Connection

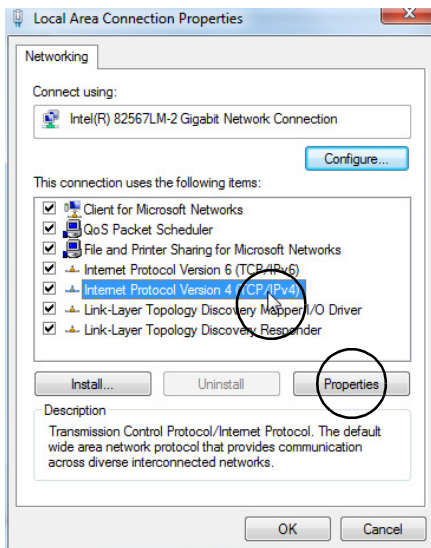


Click the Properties button





Highlight V4, then click the Properties button.



Now enter the required IP address, then click the OK button.

